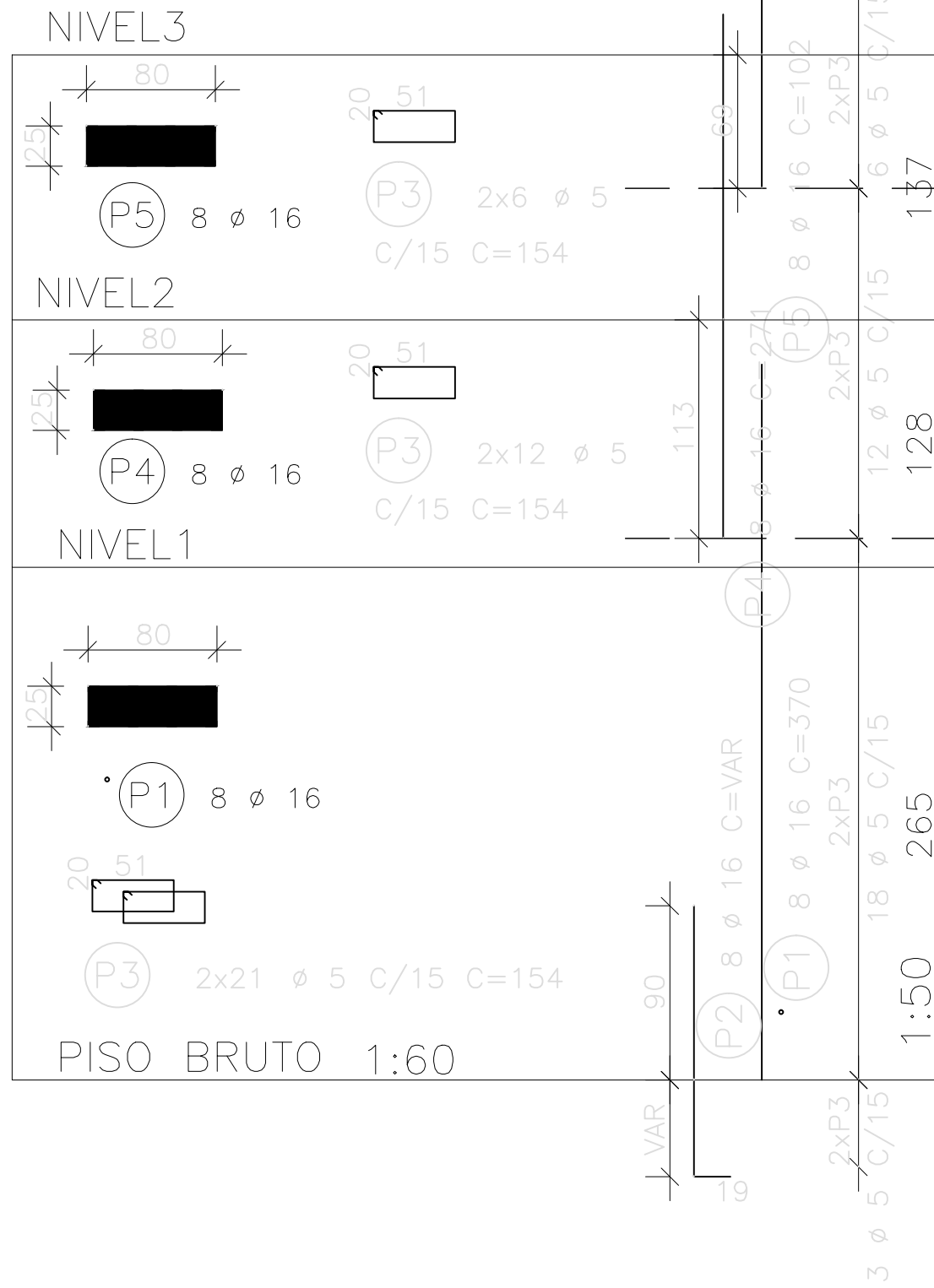
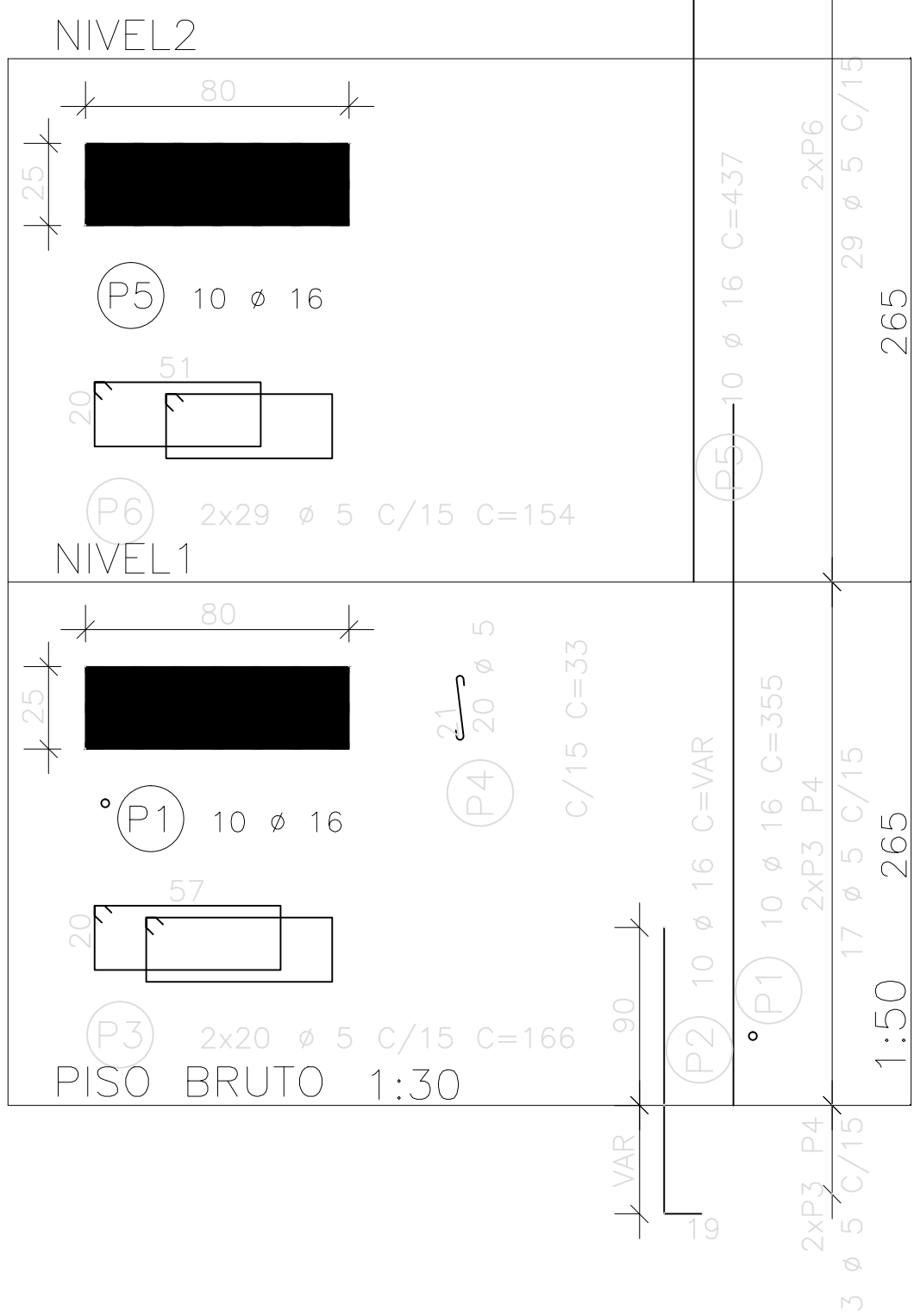


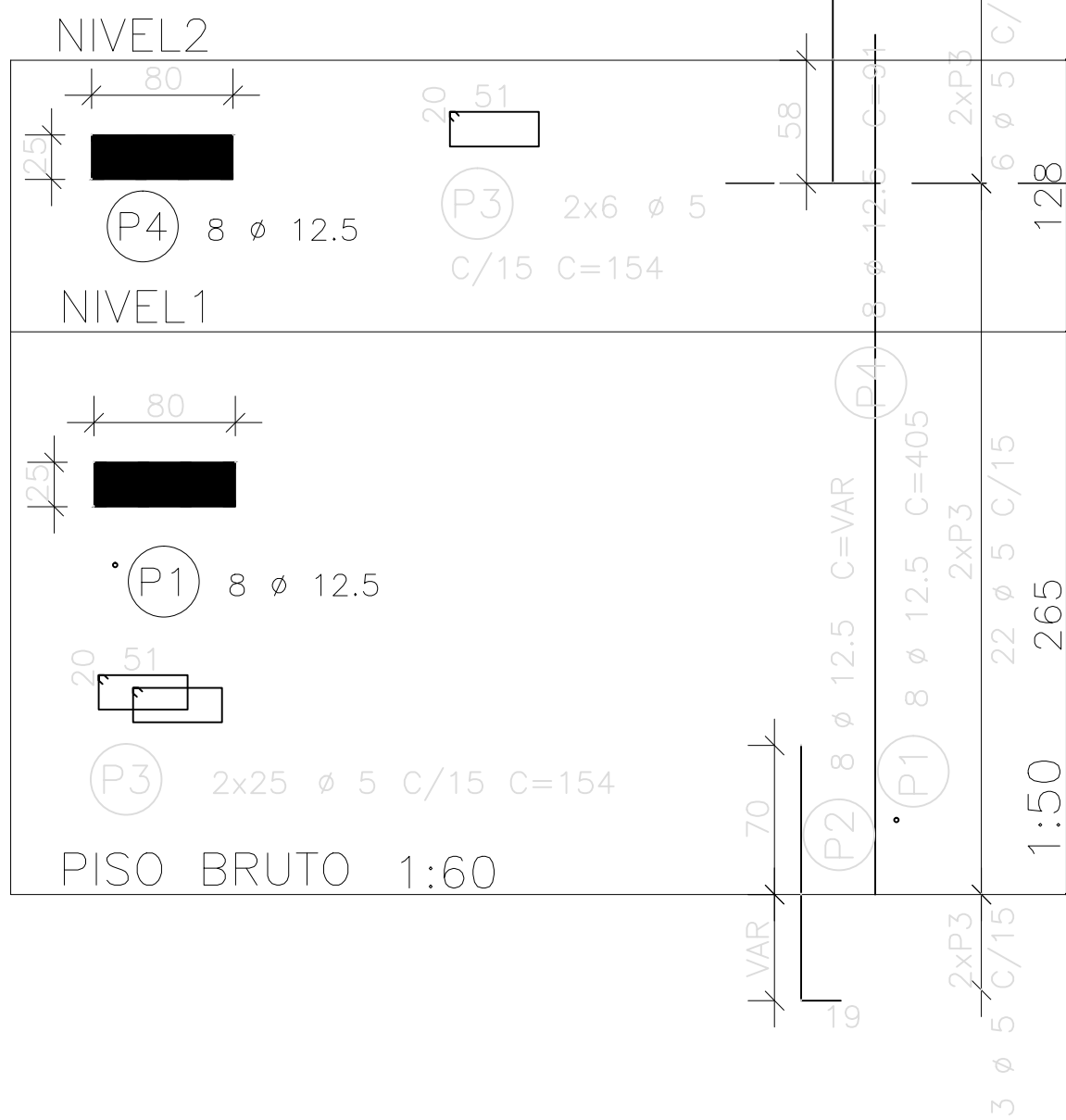
P1=P4=P16=P18 Lances 1 a 3



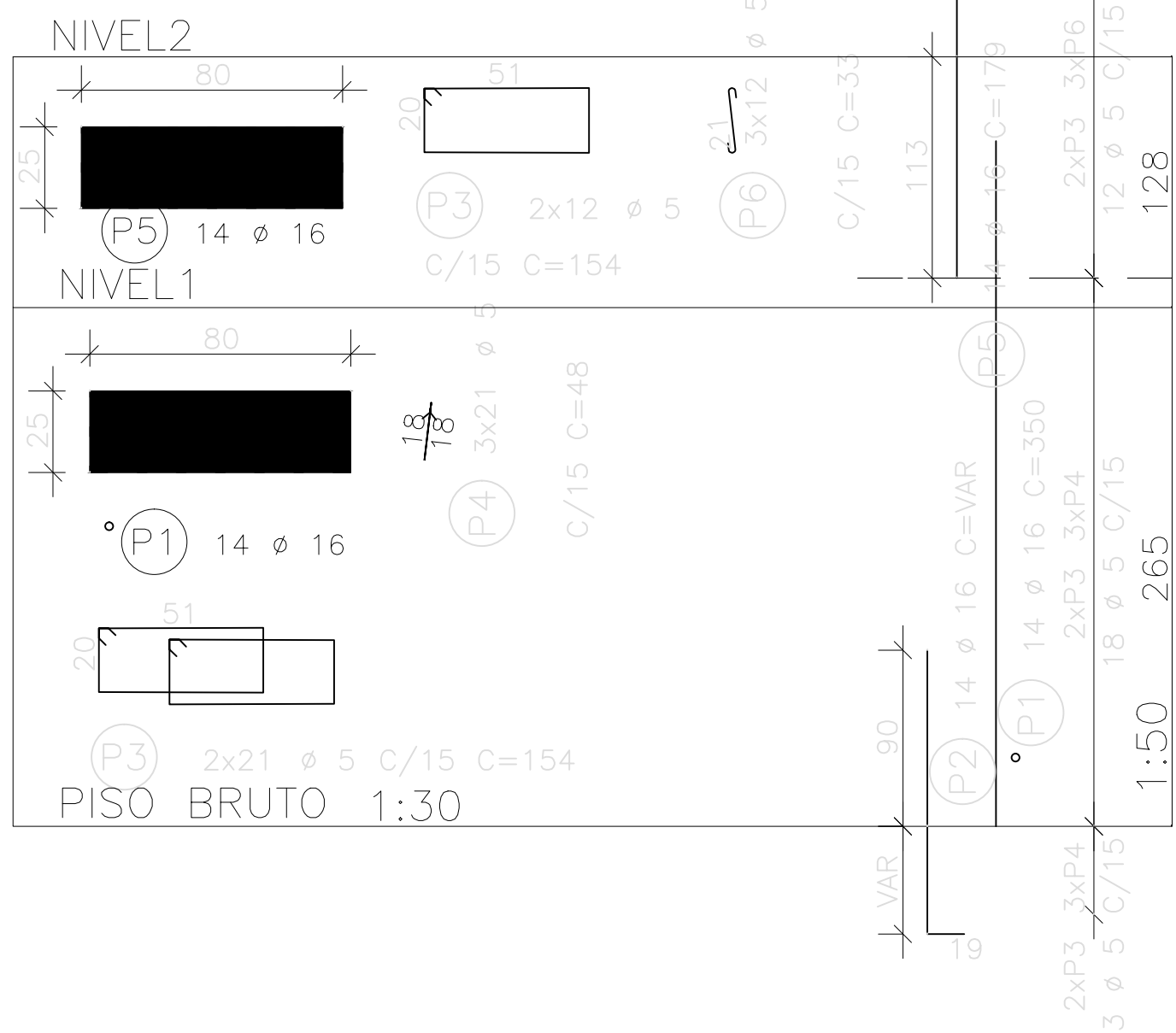
P2=P3=P15=P17 Lances 1 a 3



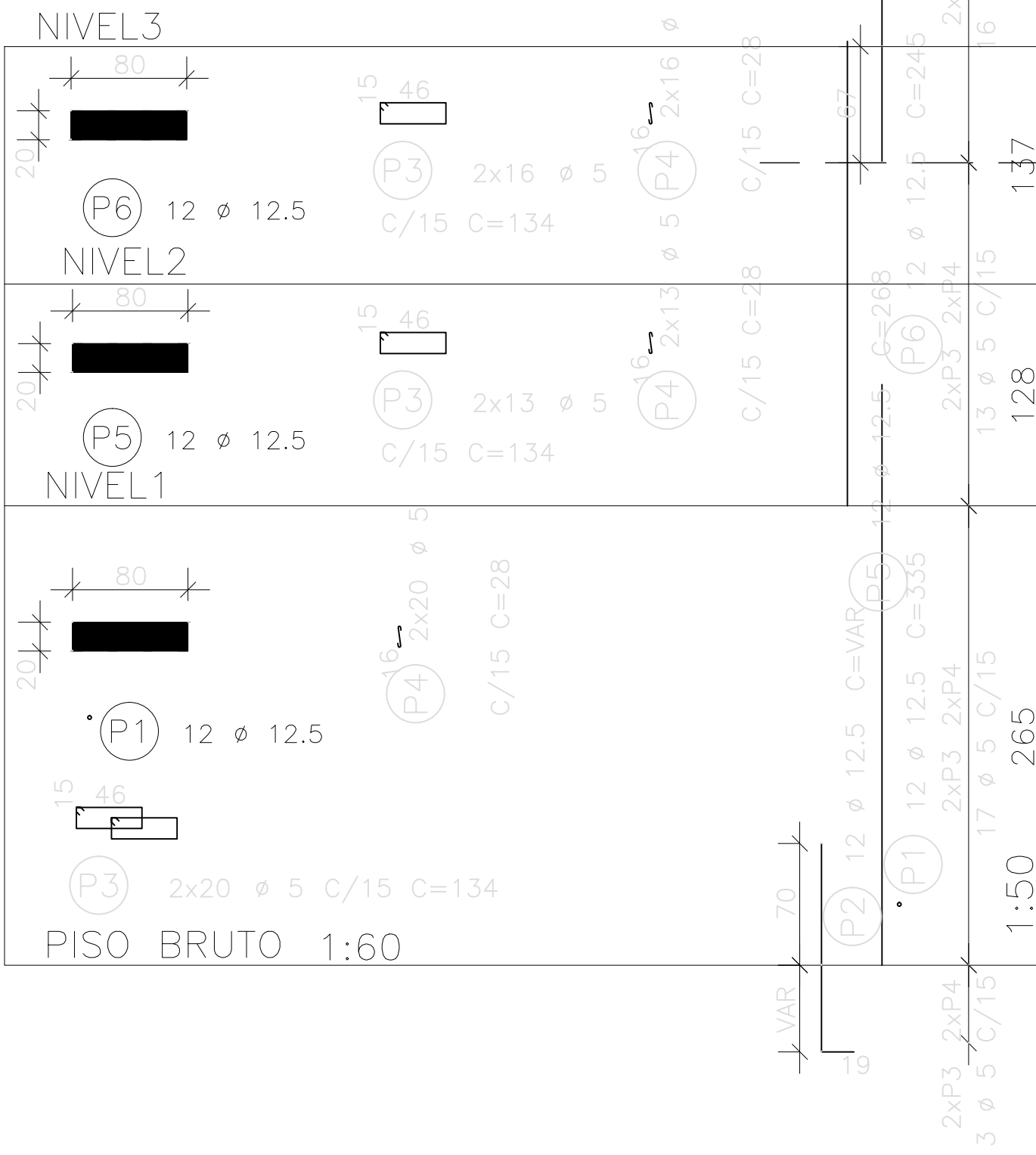
P5=P8=P10=P14 Lances 1 a 2



P6=P7=P11=P13 Lances 1 a 2



P9=P12 Lances 1 a 3



AÇO	POS	BIT (mm)	QUANT	COMPRIMENTO	
				UNIT (cm)	TOTAL (cm)
P1=P4=P16=P18 Lances 1 a 3 (X4)					
50A	1	16	32	370	11840
50A	2	16	32	--VAR--	5088
60	3	5	312	154	48048
50A	4	16	32	271	8672
50A	5	16	32	102	3264
P2=P3=P15=P17 Lances 1 a 3 (X4)					
50A	1	16	40	355	14200
50A	2	16	40	--VAR--	6560
60	3	5	160	166	26560
60	4	5	80	33	2640
50A	5	16	40	437	17480
60	6	5	232	154	35728
P5=P8=P10=P14 Lances 1 a 2 (X4)					
50A	1	12.5	32	405	12960
50A	2	12.5	32	--VAR--	4448
60	3	5	248	154	38192
50A	4	12.5	32	91	2912
P6=P7=P11=P13 Lances 1 a 2 (X4)					
50A	1	16	56	350	19600
50A	2	16	56	--VAR--	9184
60	3	5	264	154	40656
60	4	5	252	48	12096
50A	5	16	56	179	10024
60	6	5	144	33	4752
P9=P12 Lances 1 a 3 (X2)					
50A	1	12.5	24	335	8040
50A	2	12.5	24	--VAR--	3336
60	3	5	196	134	26264
60	4	5	196	28	5488
50A	5	12.5	24	268	6432
50A	6	12.5	24	245	5880

RESUMO AÇO CA 50-60			
AÇO	BIT (mm)	COMPR (m)	PESO (kg)
60	5	2404	385
50A	12.5	440	440
50A	16	1059	1695
Peso Total		60 =	385 kg
Peso Total		50A =	2135 kg

OBRA

PROJETO DE REFORMA E AMPLIAÇÃO DA FACULDADE DE ARQUITETURA E URBANISMO–FAU–UFAL.

CAMPUS A. C. SIMÕES. S/N,TABULEIRO DOS MARTINS/MACEIÓ–AL.

ESPÉCIE:

ARMAÇÃO DOS PILARES

CONCRETO

fck > 25 MPa

CÁLCULO

ENGº CIVIL

RAMON LÚCIO

CREA

8471–D/AL

DATA

02/03/2011

ESCALA

1/50

DESENHO

ALICE AGRA

VISTO

NUM. DESENHO

003/012-00

QUANT DESENHOS

REVISÃO